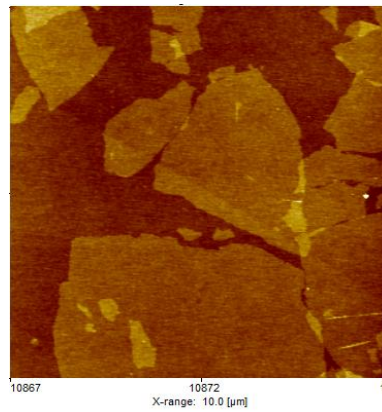
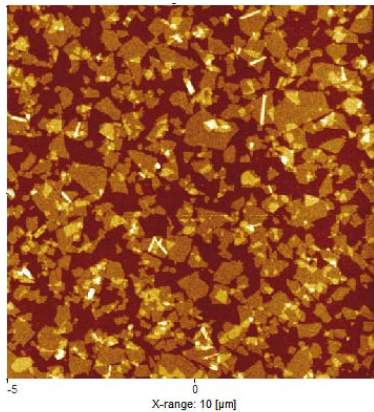


Technical data sheet: GOSi

Graphene oxide (GO) sheets supported on silicon.

Description:

Small to medium graphene oxide (GO) sheets produced by chemical graphite exfoliation, supported on silicon. Typical sheets lateral dimension 1-10 μ m; different covered densities are available to meet your needs.



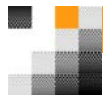
AFM image of GO after solution deposition on Si at medium covered density; small and medium platelets dimension.

Silicon oxide, gold, glass or quartz are also available as substrates; for specific request contact our technical support.

Sample reduction can be done either chemically or thermally.

AMBROGI S.A.S.

Via Goldoni, 4 – 40033 Casalecchio di Reno (BO), Italy
Phone: +39 347 1576397; Fax: +39 051 0821685;
email: service@ambrogiconsulting.com



Technical data sheet: GOSi

Main features:

	Value	Method
Platelets thickness:	1±0,3 nm	AFM
Covered density:	from 5 to 99%	AFM

Chemical analyses performed on the original solution, values expressed on mass percentage:

Carbon, C	42%
Oxygen, O	47%
Hydrogen, H	2,4%

This data sheet briefly describes and gives typical data for some of the basic properties of GOSi. It is emphasized that all data in this publication have been obtained from laboratory tests on representative samples. Thus, although the values are typical, they are for very general guidance and must not be used as a basis for specifications.

Values on specific production lot are available upon request.

Sample should be stored dry and away from direct sources of heat. More detailed information and advice on individual products may be obtained from the Sales Contacts.

Information contained in this publication, and otherwise supplied to users, are based on our general experience and are given in good faith, but we are unable to accept responsibility in respect of factors which are outside our knowledge or control.

Is the responsibility of the customer to ensure that the use complies with all relevant regulation.

AMBROGI S.A.S.