

Technical data sheet: Sol-GO

Graphene oxide aqueous solution.

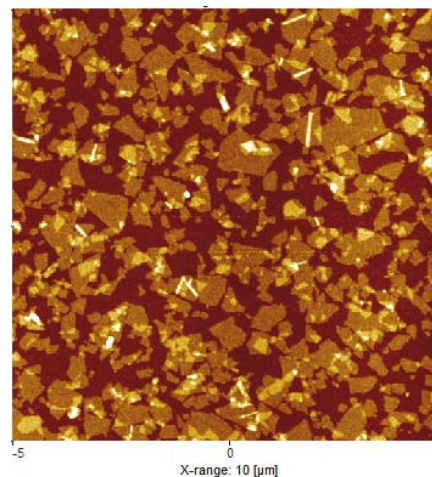
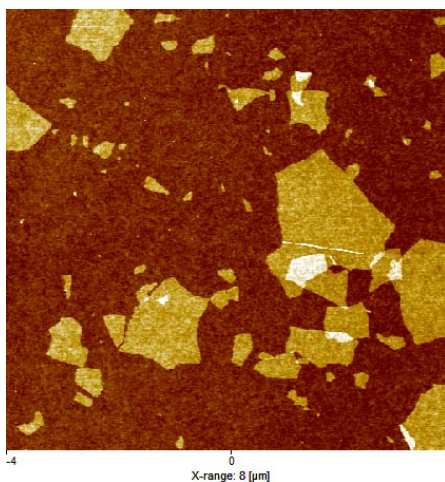
Description:

Graphene oxide (GO) aqueous solution produced by chemical graphite exfoliation. Various concentration available from 0,01 mg/ml up to 2 mg/ml.

The solution contain mainly monolayer graphene oxide sheets of variable dimension.



Medium and high concentration Sol-GO samples.



Typical AFM image of graphene oxide sheets after solution deposition on silicon: low and medium solution concentration.

AMBROGI S.A.S.



Technical data sheet: Sol-GO

Main features:

	Value	Note
pH	2-5	Depending on the solution concentration.
Monolayer percent	>80%	

Chemical analyses, values expressed on mass percentage:

Carbon, C	42%
Oxygen, O	47%
Hydrogen, H	2,4%

This data sheet briefly describes and gives typical data for some of the basic properties of Sol-GO. It is emphasized that all data in this publication have been obtained from laboratory tests on representative samples. Thus, although the values are typical, they are for very general guidance and must not be used as a basis for specifications.

Values on specific production lot are available upon request.

Sample should be stored dry and away from direct sources of heat. More detailed information and advice on individual products may be obtained from the Sales Contacts.

Information contained in this publication, and otherwise supplied to users, are based on our general experience and are given in good faith, but we are unable to accept responsibility in respect of factors which are outside our knowledge or control.

Is the responsibility of the customer to ensure that the use complies with all relevant regulation.

AMBROGI S.A.S.